

COMPOUND EO61



Detailed Information



智轻光电
ZHIQING PHOTOELECTRIC

Phone number: +86 198 6182 0181

Whatsapp: +86 198 6182 0181

Address: 1577 LongAo North Street YangGuang Financial building,
Floor 34, Room 3409, Hi-tech Industrial Development Area of Jinan,
Jinan city, Shandong Province, China



Compound Series: EO61

High Definition EO Camera 61MP



EO61

Introduction

The Compound EO61 is designed to work in different platforms, including the M300 RTK. Its main sensor is a SONY 7R IV 35mm full-frame camera with 61.0MP, this camera can achieve aerial imagery of outstanding quality, and has a huge potential for commercial and industrial applications. The EO61 can have a 0-40m or a 5-1000m range ToF to assist the user during visual inspections.

Good things come in small packages

The EO61 takes advantage of all the excellent qualities of Sony's Alpha series and integrates them into a single compact solution. Being lighter and more resistant than any existing solution on the market.

Incomparable image quality

Sony's full-frame mirror-less α 7R IV reveals ever more overwhelming photographic vision, with expressive prowess once expected only in



medium-format cameras. This is a 35mm full-frame Exmor R CMOS sensor and BIONZ X image processing engine

Swiftess

EO61 main sensor's maintains its shooting speed of up to 10fps with a mechanical shutter (up to 8fps in live-view continuous shooting mode). This allows the user to capture decisive moments.

Swiftess

EO61 main sensor's maintains its shooting speed of up to 10fps with a mechanical shutter (up to 8fps in live-view continuous shooting mode). This allows the user to capture decisive moments.



EO61 Body

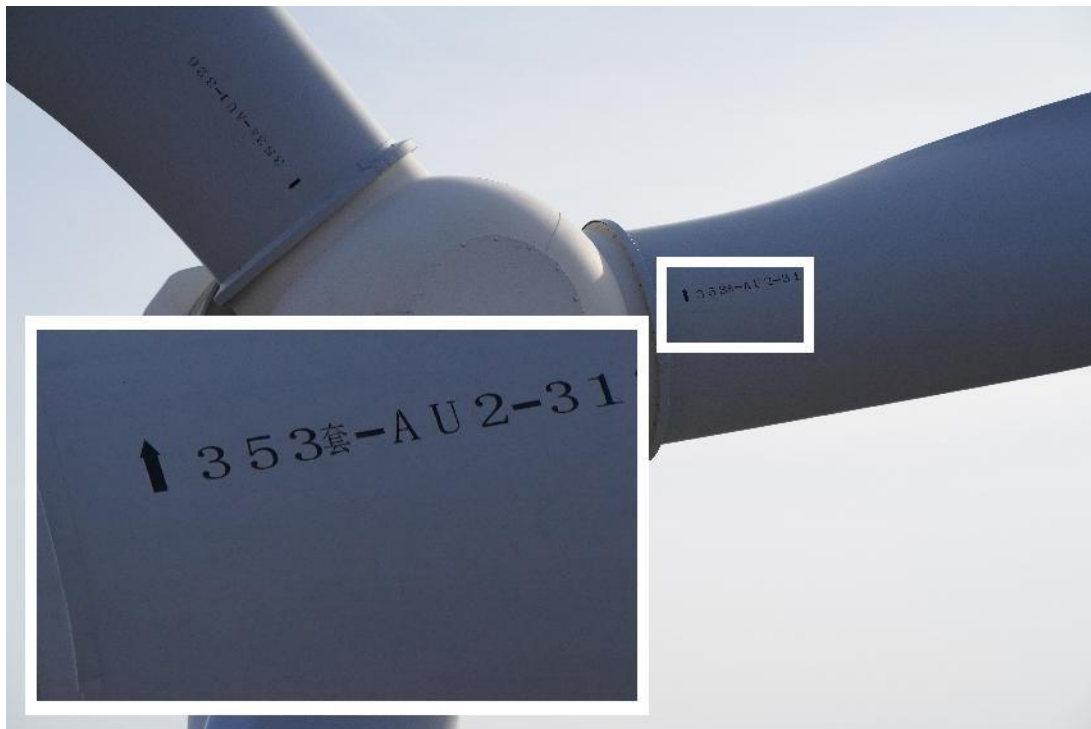
Parameters

Overall information			
Weight	1226g	Protection Level	IP45
Operation Temperature	0-40°C		
ToF Rangefinder (Short distance config.)			



Distance	0-40m	Wavelength	850nm
ToF Rangefinder (Long distance config.)			
Distance	5-1000m		
EO camera			
Resolution	9504 x 6336	Effective pixels	61Mp
Total Pixels	62.5Mp	Sensor Type	35mm full frame (35.7×23.8mm) Exmor R CMOS sensor
Sensor size	35.7 × 23.8mm	Pixel size	3.76μm
Lens aperture	F/1.8 to F22		
Gimbal			
Motor	3510	Roll	±45°
Yaw	±120°	Accuracy	±0.01°
Pitch	-90° ~ 40°	Protocol	PSDK

Samples



Wind-driven generator inspection



Wind-driven generator's blades inspection



Transmission Line
Against the light at 5m



Transmission Line
Behind the light at 5m



Transmission Line
Behind the light at 10m



Transmission Line
Towards the light at 5m



Transmission Line
Towards the light at 5m



Transmission Line
Towards the light at 10m



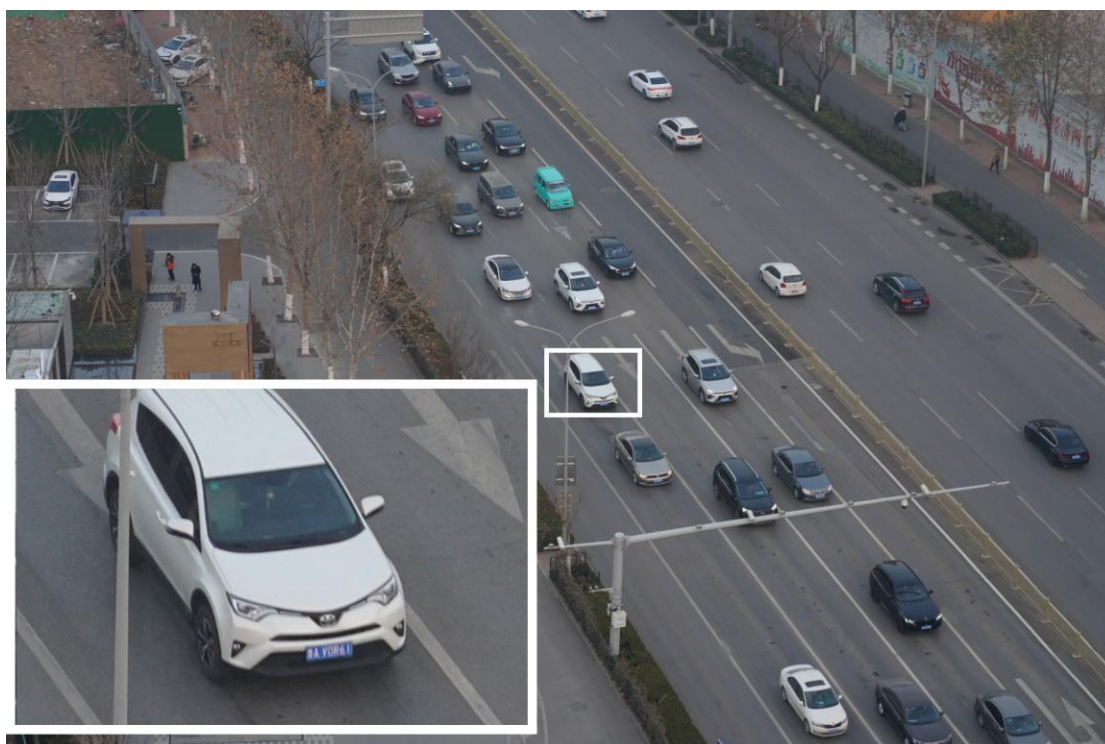
Construction Site 15m

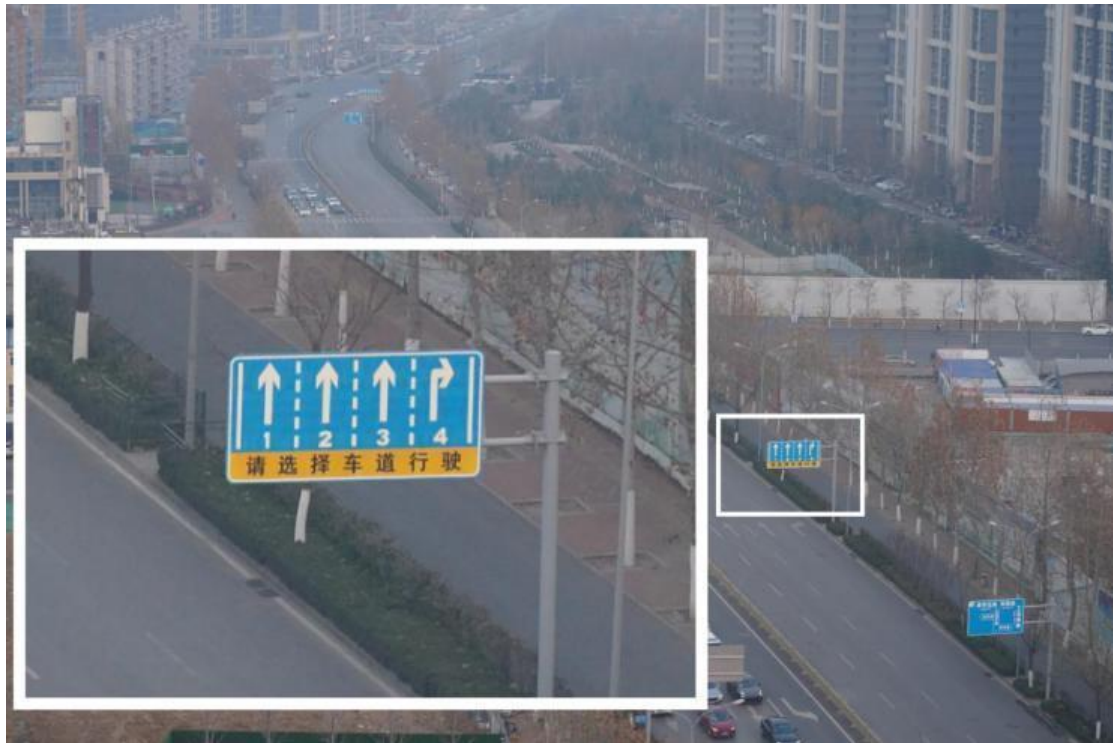


Poor light



Construction Site 15m
Poor light





Traffic

Poor light